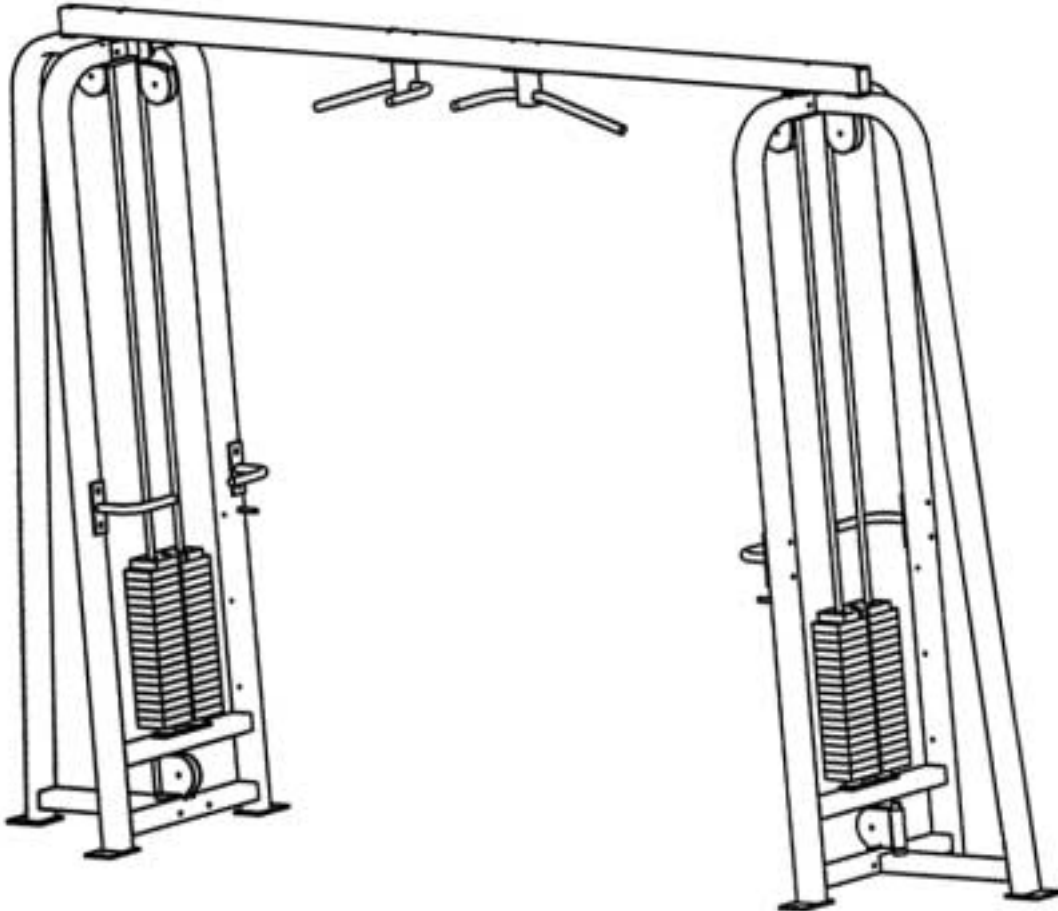




## 2 STACK MULTI-JUNGLE (SM20) UNPACKING AND ASSEMBLY INSTRUCTIONS

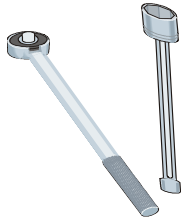


The SM20 comes partially assembled. Follow the steps below to complete the assembly.

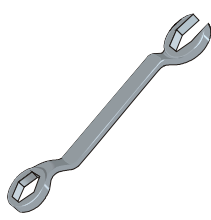


**WARNING:** COMPONENTS OF THE SM20 ARE LARGE AND HEAVY. USE CAUTION WHEN ASSEMBLING THIS MACHINE.

## MATERIALS AND TOOLS REQUIRED FOR ASSEMBLY



9/16"  
Socket wrench with  
extension



9/16"  
Combination  
wrench



Pinch bar

You will also need a ladder.

## ASSEMBLY TIME

Two people can accomplish this assembly in approximately 1/2 hour.

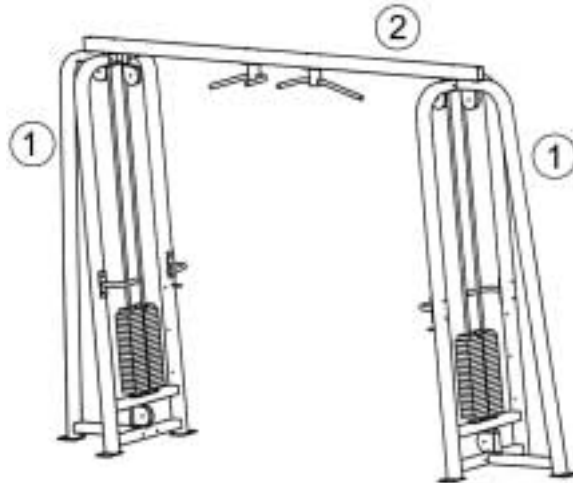
## UNPACKING

Follow the steps below when unpacking the components of the SM20.

1. **Cut off the shipping wrapper.**
2. **Remove the parts box and shipping boards.**
3. **Remove the items in the parts box.**

## ASSEMBLY

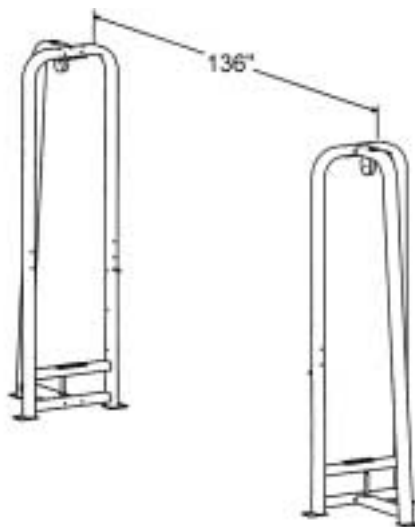
Figure 1 shows an assembled SM20.



**Figure 1. SM20 main components (cables removed for clarity).**

1. 1 stack cell (2)
2. Connecting beam

- 1. Place the two weight “cells” in their final resting spots. The cells will be approximately 11’4” apart as shown in Figure 2.**



**Figure 2. Set the weight stack cells.**

- 3. **Bolt on the connecting beam** using a 5/8" socket with extension and combination wrench, to the cells using the four 7/16" x 6" bolts, 7/16" washers, and 7/16" nuts, end cap washers and end caps. Figure 3 shows the connected cells. You may wish to use a pinch bar to align the bolt holes.

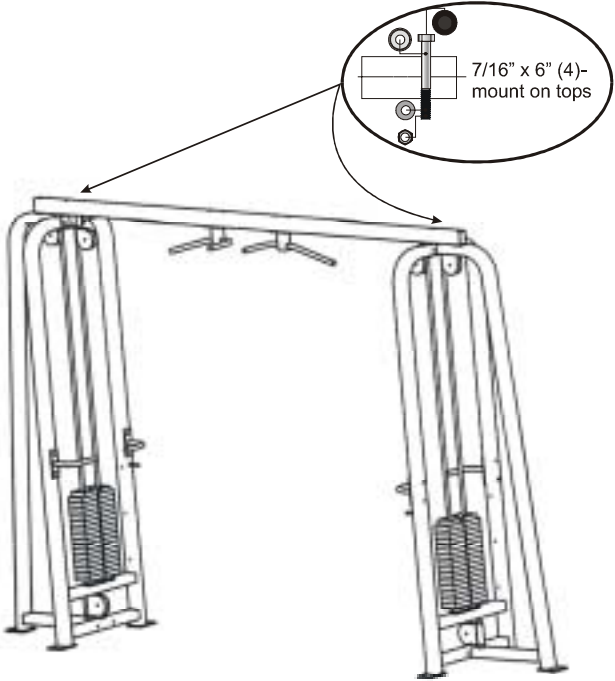


Figure 3. Bolt on the connecting beam.

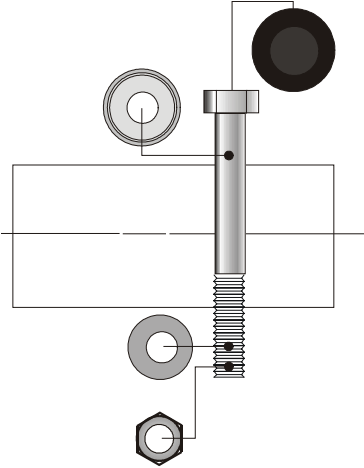


Figure 4. Configuration for 6" bolts.

## CROSSOVER CABLE ROUTING

**NOTE: THE INFORMATION BELOW IS FOR REFERENCE ONLY. THE CABLES ON THE SM20 HAVE BEEN INSTALLED AT THE FACTORY.**

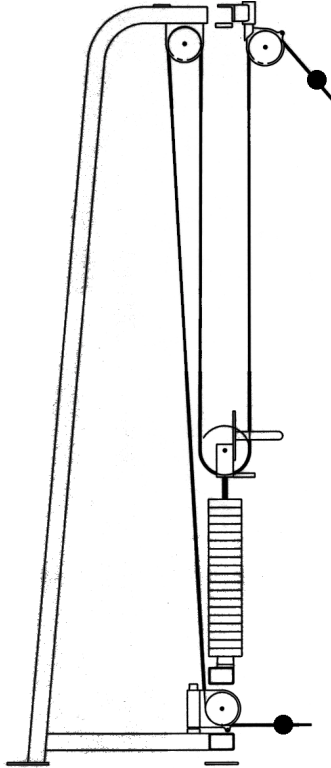
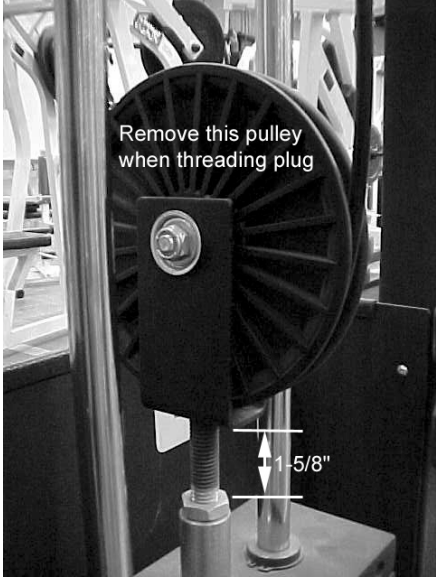
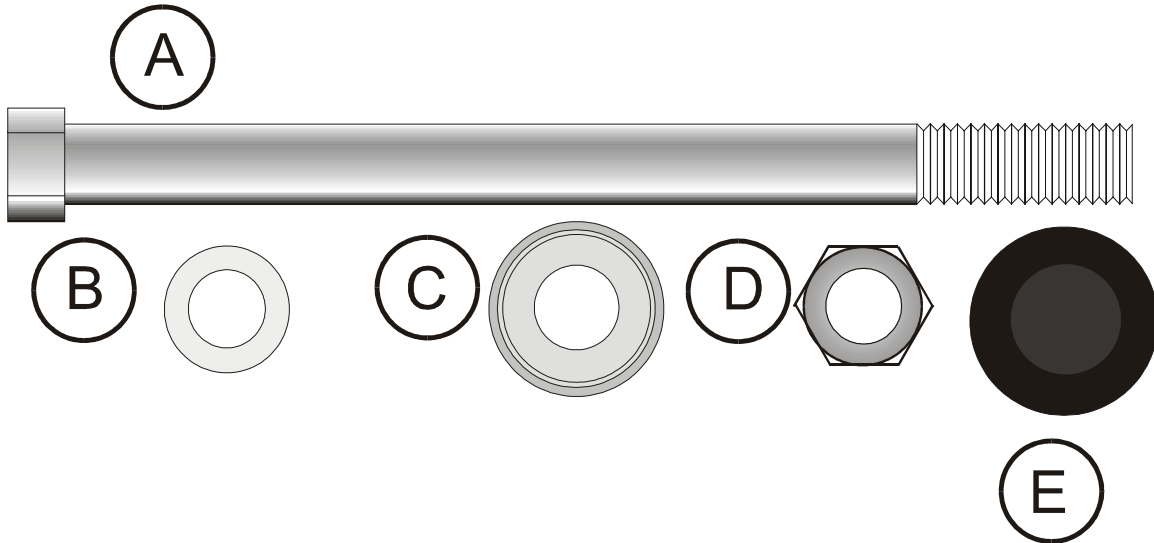


Figure 5. Crossover cable routing.



**Figure 8. Screw the pulley into the weight stack.**

**HARDWARE**



**Hardware Figure 1. Assembly Parts.**

The parts shown in Hardware Figure 1 are used to assemble the SM20. They are:

- A. 7/16" x 6" hex head bolt (used to bolt connecting beam to the tops of the cells)
- B. 7/16" flat washer
- C. 7/16" cap washer (use on head end of the 6" bolt so end cap will fit on the nut)
- D. 7/16" hex head nut
- E. End caps (bolt covers)

**PARTS LIST** Hardware Kit: SK50-S0079-0000

Part #	ID	Description	Quantity
	<b>Main components</b>		
	1	1-stack cell	2
	2	Connecting beam	1
	<b>6" bolt hardware</b>		
0017-00101-1561	A	7/16" x 6" hex head bolt	4
0017-00104-0363	B	7/16" flat washer	4
0017-00104-0366	C	7/16" cap washer	4
0017-00103-0233	D	7/16" Nyloc nut	4
0017-00042-0969	E	End caps	4
	<b>Handle and bar hardware</b>		
		Safety carabiner	2
		Crossover handle	2
		Leg strap	1